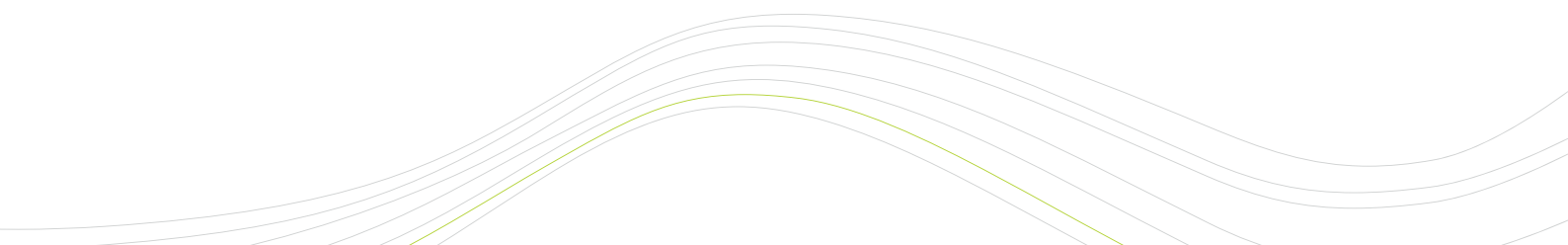




# Norwegian nautical charts and nautical publications



Kartverket



# Product catalogue of Norwegian nautical charts and nautical publications

The product catalogue provides an overview of nautical charts and nautical publications published by the Norwegian Hydrographic Service. Chart retailers and major chart users rely on this catalogue for planning their purchases. Vessels should carry the catalogue on board as an aid to the planning and updating of their stock of charts. The catalogue is free.

## Use of products published by the Norwegian Mapping Authority

The Norwegian Mapping Authority's products are protected pursuant to the Norwegian Intellectual Property Act (Lov om opphavsrett til åndsverk med videre) of 12 May 1961. The Mapping Authority has exclusive rights to the use of its products.

### Disposal rights

On purchase of products from the Norwegian Mapping Authority, the purchaser also procures the right to dispose of said products. This right to dispose entitles the purchaser to utilise the product for in-house or personal use. If the customer is a legal entity, copying and display is permitted for in-house purposes. In the case of private individuals, copying and display is permitted for personal use.

Reproduction in the form of the conversion of analogue products to electronically legible formats, such as by digitisation and scanning, is prohibited without specific agreement. The copying of software is not permitted.

This means the unrestricted use of printed charts and analogue copies of the charts.

Copying is permitted for in-house or personal use. Copying may also be permitted in cases where the purchaser has an agreement with KOPINOR. Copying for sale or other distribution outside the limits of in-house use is not permitted. This requires a marketing rights agreement.

### Reproduction for mass media purposes, etc.

Charts or sections of charts may be freely reproduced in the mass media, journals, scientific disputations and theses, provided that such reproduction does not constitute a significant part of, or a prerequisite for the publication in question. The Norwegian Hydrographic Service shall be cited as the source.

### Use of charts for planning purposes

There are no restrictions on the use of nautical charts as basic geographical data for public sector planning purposes. They can also be freely distributed if this is essential to the objective in question. In such cases, the Norwegian Hydrographic Service shall be cited as the source, and notification shall be given that use of the nautical chart in question is restricted to the specific case.

### Fair sheets

Customers who wish to purchase copies of hydrographical originals shall submit a written application to the Norwegian Hydrographic Service. The application will be considered in consultation with the Royal Norwegian Navy. Use of the chart may be restricted in accordance with the definition of disposal rights as described above.

### Digitisation and scanning

Customers who wish to digitise or scan nautical charts shall submit an application for written permission to the Norwegian Hydrographic Service. Disposal and/or marketing rights to digital copies must be the subject of separate agreements.

*Foto forside: Morten Brun*



### **Marketing rights**

The use of products outside the limits defined above requires marketing rights. Marketing rights constitute entitlements to reproduce copies or modified versions of a given product for the purposes of selling or otherwise distributing said copies. Customers must first be granted disposal rights before they can be entitled to marketing rights.

Customers seeking marketing rights must submit an application to the Norwegian Hydrographic Service. The Norwegian Mapping Authority will take the necessary steps if regulatory provisions are contravened, make formal complaints in the event of criminal acts, and claim damages for illegal use. Any liability for errors or omissions in connection with the products will be pursuant to general regulations dealing with contracts and related claims. The Norwegian Mapping Authority accepts no liability for consequential loss resulting from use of its products. The customer is responsible for assessing whether the product meets their specific needs.

### **Numbering of nautical charts**

Charts 001–199	scale	1:50 000 – 1:100 000
Charts 300–399	scale	1:350 000 – 1:10 000 000
Charts 401–499, harbour charts	scale	1:5 000 – 1:25 000
Charts 501–550, Arctic and Antarctica	scale	1:15 000 – 1:2 000 000





## The chart regime

The frequency with which a chart is published depends on factors such as the number and type of corrections, combined with levels of sales. Norwegian nautical charts are not printed any more. The charts are continuously updated and can be purchased as POD-Charts (see page 8). If major updates, the chart is published as "new chart" or "new edition".

### New charts

A nautical chart is published in the "new chart" category if it incorporates major modifications in design, geographical delimitation or content.

**A "new chart" represents the first edition of a nautical chart which either:**

- covers an area which has not previously been charted at the scale in question.
- incorporates a modified geographical area for a previously existing chart.
- incorporates an updated version of an existing chart in relation to symbols and general presentation.
- incorporates the adoption of an international (INT) chart, or a non-Norwegian chart originally.
- published by another state.

When a new chart is published, all previous editions of the chart in question will be made obsolete. Notifications of corrections to the chart in the Notices to Mariners (Efs) will, from publication date onward, relate only to the new chart.

### New editions

If the Norwegian Hydrographic Authority becomes aware of new information regarding critical navigational alterations to a given chart, it will be republished in the category "new edition". As well as these new alterations, the new edition will incorporate corrections previously published in the Notices to Mariners (Efs).

When a chart is published as a “new edition”, the existing edition of the chart will be made obsolete. Notifications of corrections to the chart in the Notices to Mariners (Efs) will, from publication date onward, relate only to the new edition.

### **Re-prints**

When an existing chart is reprinted without the inclusion of critical navigational alterations, it is classified as a “re-print”. A re-print will be updated with all corrections and modifications previously published in the Notices to Mariners (Efs). The chart may also incorporate corrections of non-critical navigational significance not previously published in the Notices to Mariners (Efs).

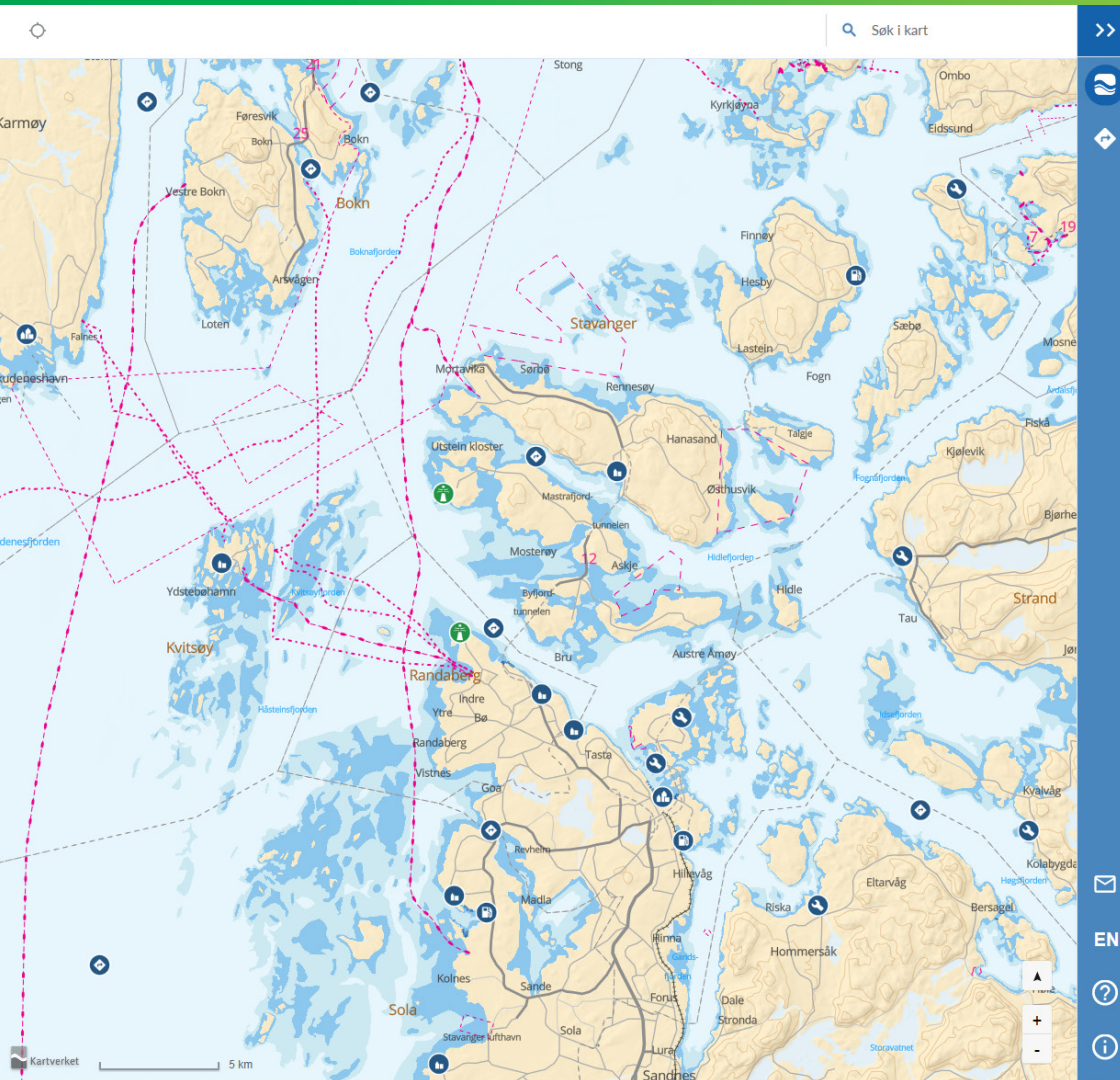
The previous edition of the chart will remain valid, provided that it is updated with corrections published in the Notices to Mariners (Efs).

## **Chart graticules**

In the past, Norwegian nautical charts have employed a variety of graticules. Prior to 1957 the Norwegian graticule NGO1948 was employed for most purposes, while charts published in the period 1957–1992 used a graticule based on the European Datum (ED50). Charts produced since 1992 have employed a graticule based on the World Geodetic System (WGS84). The old reference systems are of variable quality, and system irregularities have caused problems for some users. These problems have increased in step with improvements in the quality of the positioning systems employed. Modern satellite systems offer positioning accuracies somewhat in excess of the quality of the old reference systems. For this reason, the Norwegian Hydrographic Service decided in 1993 to introduce a new satellite-based reference system and WGS84 replaced ED50 as the official horizontal reference system in Norwegian waters. This is a globally-utilised international geodetic reference system which is free of the major problems arising from the irregularities we are familiar with in the older systems. Positions obtained from GPS-based systems can be plotted directly onto charts which employ a WGS84 graticule.

All Norwegian charts are published with graticule based on WGS84 datum.





## Farvannsbeskrivelsen

### Den norske los

#### Farvannsbeskrivelsen Den norske los

Dette er første versjon av den digitale farvannsbeskrivelsen Den norske los.

Her vil du finne en beskrivelse av farvannet langs norskekysten med Svalbard. Den norske los er et supplement til sjøkartet og gir informasjon utover det sjøkartet gir. Sjøkartet, enc eller papir er det offisielle navigasjonsprodukt.

Den norske los er en informasjonskilde som inneholder blant annet kart, selingsbeskrivelser, opplysninger om farvannet, havner, anløpssteder, ankerplasser med mer.

Viktig informasjon om vær, vind og tidevannsstrømmer er også å finne.

Innhold er georeferert og du kan få oppslag ved å navigere og klikke på iconer i kartet eller ved bruk av søkefeltet. I versjon 1.0 vil det fortsatt være innhold fra pdf utgavene som ikke er med. Vil vi fortsette arbeidet med å georeferere og oppdatere innhold og det legges ut i løsningen fortløpende.

Du kan planlegge en rute og få en rapport om innhold (point of interest) langs ruten.

Det er Kartverket som utgir farvannsbeskrivelsen Den norske los og den vil erstatte bokversjonen og pdf utgaver som ligger på våre nettsider.

## The Norwegian Pilot Guide

The Norwegian pilot is available digitally and free of charge at <https://dnl.kartverket.no/>. The Norwegian Pilot Guide consists of sailing directions for the Norwegian coast, Svalbard and Jan Mayen, and is a supplement to the nautical charts. The publication contains sailing directions for the various fairways and channels. It provides information on harbours, destinations and anchorage areas. For ships subject to registration, it is statutory that the publications must be on board, but also for smaller vessels and recreational boats, the Norwegian pilot will be good for planning and support during the voyage. Other information includes: Information about quays, bunkers, shipyards and local businesses. Translation of content into English is not complete. Volume 1 and volume 7 are not yet part of the digital Norwegian Pilot Guide, they will be released at a later date. More information at: <https://kartverket.no/en/at-sea/nautical-publications/the-norwegian-pilot-guide--sailing-directions>

## Symbols and abbreviations on Norwegian nautical charts

This publication provides an overview of symbols and abbreviations used on Norwegian nautical charts and in publications. The Norwegian Mapping Authority has decided that all Norwegian nautical charts will be published as far as possible according to the cartographic standards adopted by the International Hydrographic Organisation (IHO). Since it will take many years to revise all Norwegian nautical charts, both new and older symbols and abbreviations are referred to in this publication.

Can be downloaded for free at [www.kartverket.no](http://www.kartverket.no).

Kartverket

Hva leter du etter?

Kontakt oss Language ▼ MENY

Kartverket ← Til sjøs ← Efs

## Rettelser til sjøkart (Efs)

Sikkerhetskritiske oppdateringer og rettelser til offisielle norske sjøkart, publiseres i Etterretninger for sjøfarende (Efs) hver 14. dag. I tillegg publiseres midlertidige (T) og foreløpige meldinger (P) vedrørende seilas i norske farvann, skyteøvelser og andre advarsler.

Finn Efs-meldinger Slik finner du kartnummeret

Søk på kartnummer eller fritekst Kartoversikt Søk

Siste Efs-utgave  Meldinger fra valgte kart siden siste kartutgivelse [Nullstill søk](#)

Siste utgave av Efs PDF Midlertidige og foreløpige meldinger PDF Trykningsdatoer for sjøkart PDF

## Notices to Mariners (Efs)

“The Notices to Mariners” (Efs) publication is issued twice a month and contains information which makes it possible for mariners to keep their charts updated. It contains information such as the establishment of new lights and changes to existing lights, fixed and floating navigational aids, recently-identified shoals, new or modified subsea cables and pipelines, overhead structures, shipwrecks or other obstructions which may constitute a hindrance to vessels. Notifications are also provided concerning gunnery exercises, directives and regulations pertaining to sailing in certain areas, changes to pilot stations and such like. All mariners should be aware of the risks involved when navigating using outdated charts, and the liability they assume as a result.

Free download from [www.kartverket.no/efs](http://www.kartverket.no/efs).

## Tide tables

Tide tables for almost any location along the Norwegian coast can be downloaded for free at the web-service Se havnivå, <https://kartverket.no/en/at-sea/se-havniva>. The table gives times and heights of high and low waters for the location. Heights are given in cm above Chart Datum, which is the reference level for depths in navigational charts. A level diagram with important vertical datums for the location is included.

Tide tables are for long-term planning. We recommend water level forecast at Se havnivå for planning within the next five days.

## QR-code

The Hydrographic Service has introduced QR (Quick Response) codes on its charts in order to make the updating process easier. It is now possible to easily check updates on a given chart and find out when the last version was published.

## Print on demand (POD)

POD charts refer to updated charts printed on request. The aim here is to meet user demand for updated nautical charts.

The Hydrographic Service currently prints its charts at intervals of about two years. Some charts have shorter and others longer intervals between printings. On purchasing a new chart, our customers are thus often faced with the major task of updating these with the most recent Notices (Efs).

Through the Print on Demand service, charts updated with the most recent Notices to Mariners (Efs), published every 14 days, are available to users. This save the user the time-consuming task of updating the printed chart.

The service is offered to users via authorised Print on Demand (POD) suppliers. View the list of suppliers in the article [“Distributors of Print on Demand”](http://www.kartverket.no/en/Bestille/Order-maps-and-nautical-charts/) at <http://www.kartverket.no/en/Bestille/Order-maps-and-nautical-charts/>

Provided it is updated with the aid of the “Notices to Mariners” (Efs), a chart supplied using this service will be equivalent to the printed chart in relation to the requirements of the International Maritime Organization (IMO)/SOLAS.

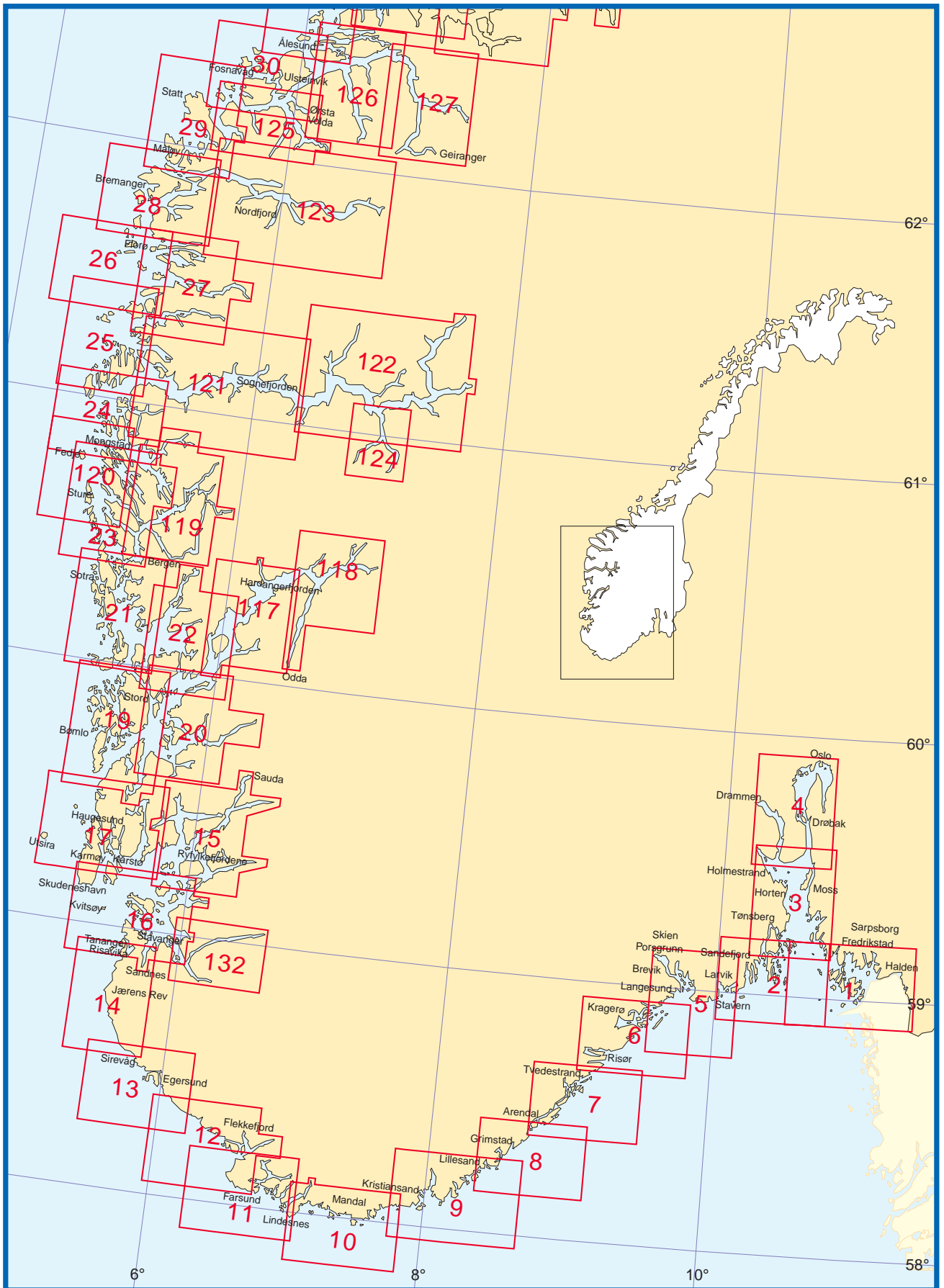
All Norwegian Charts are available as POD-Charts only.

## The Main Chart Series

The Main Chart Series provides charts for the Norwegian coast from the Swedish border in the south to the Russian border at Grense Jakobselv in the north. The scale is normally 1:50 000. The Main Chart Series is first and foremost intended to provide navigational charts for inner coastal waters. They often come with special editions printed at larger scales in areas where navigation is especially challenging. For information about the Main Chart Series for Svalbard, Jan Mayen and Bouvetøya, see page 19.

No	Title	Scale
001	Oslofjorden. Færder – Hvaler – Halden	1:50 000
002	Torbjørnskjær – Fulehuk – Rakkeåane	1:50 000
003	Oslofjorden. Fulehuk – Filtvet – Rødtangen	1:50 000
004	Oslo – Rødtangen – Drammen	1:50 000
005	Svenner – Porsgrunn – Jomfruland	1:50 000
006	Jomfruland – Risør	1:50 000
007	Risør – Arendal	1:50 000
008	Arendal – Lillesand	1:50 000
009	Lillesand – Ny-Hellesund	1:50 000
010	Ny-Hellesund – Lindesnes	1:50 000
011	Lindesnes – Lista	1:50 000
012	Lista – Svåholmen	1:50 000
013	Nesvåg – Kvasseheim	1:50 000
014	Ogna – Tananger	1:50 000
015	Ryfylkefjordane. Sjernarøyane – Sauda	1:50 000
016	Tananger – Stavanger – Skudenes	1:50 000
132	Høgsfjorden – Lysefjorden	1:50 000
017	Karmsundet - Ryvarden - Skjoldafjorden	1:50 000
019	Ryvarden – Selbjørnsfjorden	1:50 000
020	Sunnhordlandsfjordene	1:50 000
021	Selbjørnsfjorden – Bergen	1:50 000
022	Samnanger- Bjørna- og Ytre Hardangerfjorden	1:50 000
117	Ytre Hardangerfjorden	1:50 000
118	Indre Hardangerfjorden	1:50 000
119	Osterfjorden og Sørfjorden	1:50 000
023	Bergen – Fedje	1:50 000



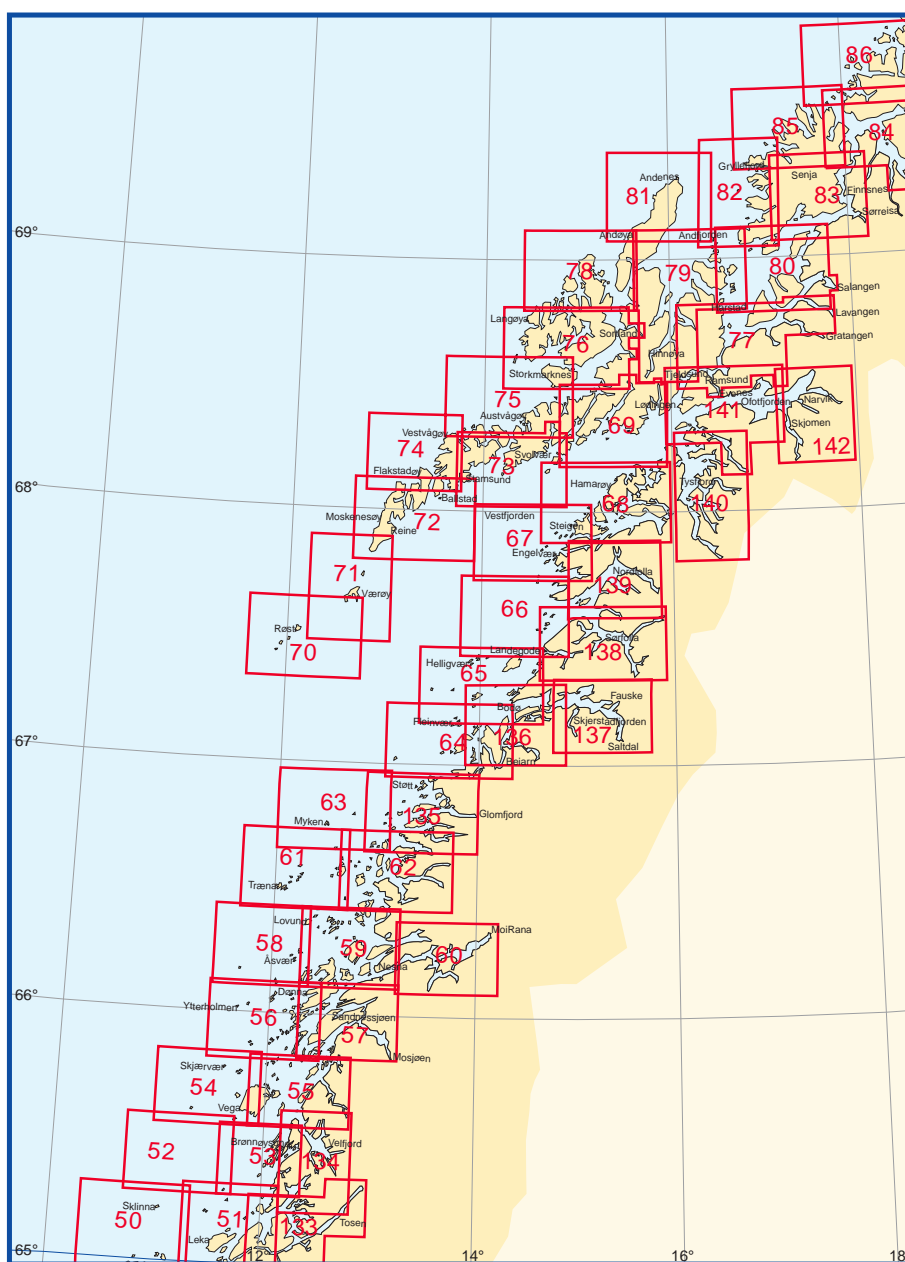




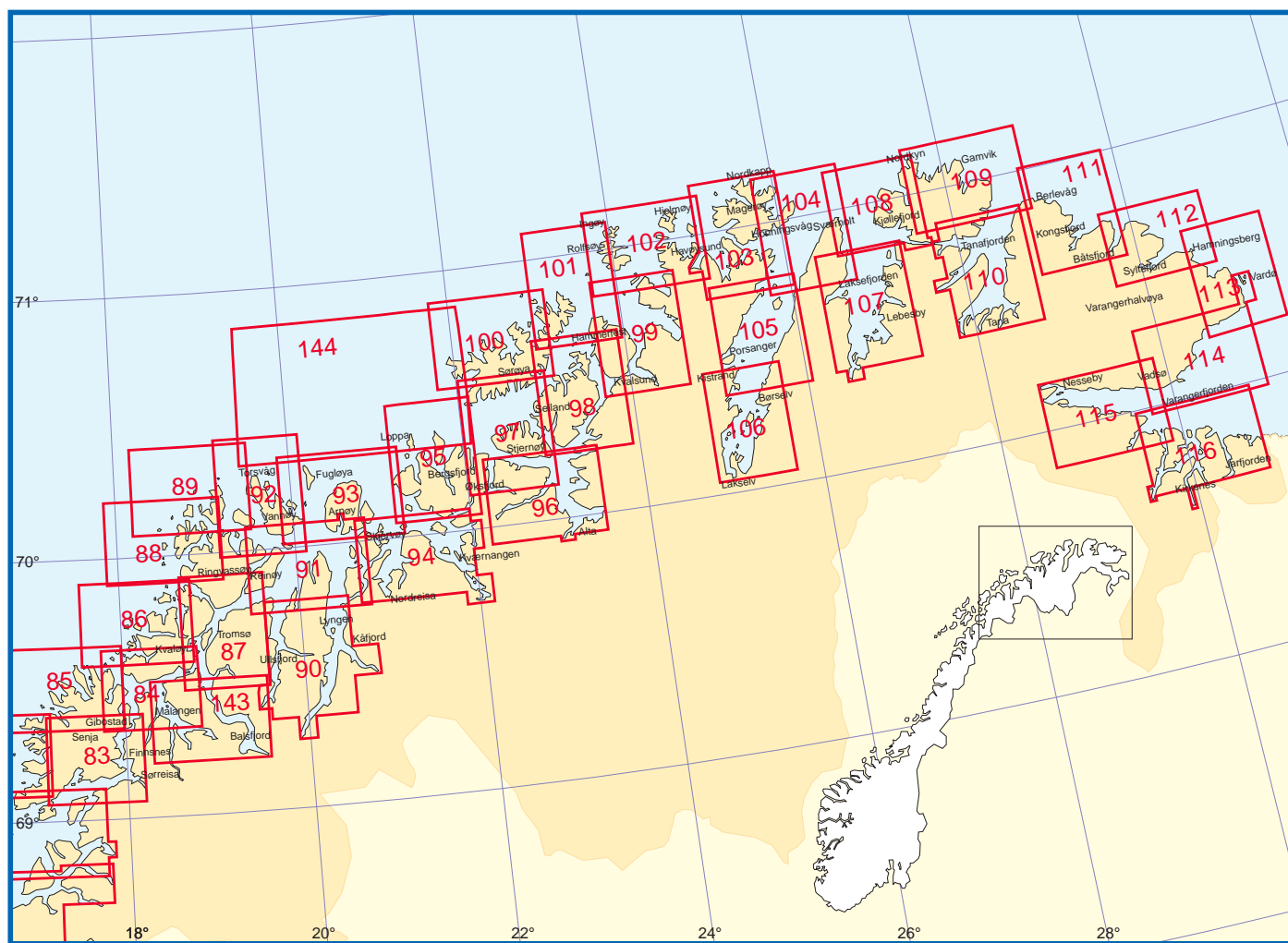
No	Title	Scale
037	Kyrhaug – Trondheimsleia	1:50 000
038	Trondheimsleia. Terningen – Kyrksæterøra – Ørlandet	1:50 000
039	Trondheimsfjorden. Agdenes – Thamshamn – Buvika	1:50 000
040	Smøla	1:50 000
130	Trondheimsfjorden. Trondheim – Skogn	1:50 000
131	Trondheimsfjorden. Levanger – Steinkjer	1:50 000
041	Frøya – Gjøsing	1:50 000
042	Gjøsing – Halten	1:50 000
043	Agdenes – Lauvøya	1:50 000
044	Lauvøya – Halten – Roan	1:50 000
045	Roan – Grunna	1:50 000
046	Folda	1:50 000
047	Namsfjorden	1:50 000
048	Gjøslingen – Dolmsundet	1:50 000
049	Ytter-Vikna	1:50 000
050	Vikna – Sklinna	1:50 000
051	Dolmsundet – Lyngvær	1:50 000
133	Innerfolda – Tosen – Bindalsfjorden	1:50 000
052	Høgbrakan	1:50 000
053	Lyngvær – Straumøyan	1:50 000
134	Ursfjorden og Velfjorden	1:50 000
054	Vega – Bremsteinen – Skjærvær	1:50 000
055	Straumøyan – Tjøtta	1:50 000
056	Tjøtta – Dønna	1:50 000
057	Vefsn- og Leirfjorden	1:50 000
058	Skipbåtsvær – Træna	1:50 000
059	Dønna – Lurøya	1:50 000
060	Ranfjorden	1:50 000
061	Træna – Nesøya – Myken	1:50 000
062	Lurøya – Nesøya – Rødøya	1:50 000
063	Myken – Ternholman	1:50 000
135	Rødøya – Støtt	1:50 000
064	Støtt – Saltfjorden	1:50 000
136	Beiarn – Saltfjorden	1:50 000
137	Skjerstadvfjorden – Rognan	1:50 000
065	Fleinvær – Bodø – Landegode	1:50 000
066	Landegode – Kjerringøy – Leines	1:50 000
138	Sørfolda	1:50 000
139	Nordfolda	1:50 000
067	Leines – Grøtøya – Steigen	1:50 000
068	Steigen – Sagfjorden – Tranøy	1:50 000
069	Tranøy – Raftsundet	1:50 000
140	Tysfjorden	1:50 000
141	Ofotfjorden	1:50 000
142	Narvik – Skjomen – Rombaken	1:50 000
070	Røst – Værøy	1:50 000
071	Værøy – Lofotodden	1:50 000
072	Lofotodden – Stamsund	1:50 000
073	Ure – Gimsøystraumen – Svolvær	1:50 000
074	Fuglehuk – Ramberg – Eggum	1:50 000
075	Eggum – Gimsøy – Gaukværøya – Stokmarknes	1:50 000
076	Stokmarknes – Sortland – Malnes	1:50 000
077	Tjeldsundet – Harstad – Lavangen	1:50 000
078	Hovden – Langenes – Risøysundet	1:50 000
079	Risøysundet – Kvæfjorden – Harstad	1:50 000
080	Harstad – Sjøvegan – Dyrøya	1:50 000



No	Title	Scale
081	Nordmela – Andenes – Dverberg	1:50 000
082	Andfjorden	1:50 000
083	Dyrøya – Gibostad	1:50 000
143	Malangen og Balsfjorden	1:50 000
084	Gibostad – Rystraumen – Hekkingen	1:50 000
085	Ytre Senja	1:50 000
086	Ytre Kvaløya	1:50 000
087	Rystraumen – Tromsø – Grøtsundet	1:50 000
088	Lyngøya – Nordkvaløya	1:50 000
089	Sørfugløya – Torsvåg	1:50 000
090	Ullsfjorden og Lyngen	1:50 000
091	Grøtsundet – Lyngstuva – Kågen	1:50 000
092	Karlsøy – Flatværet – Gåsan	1:50 000
093	Fugløya – Arnøya	1:50 000
144	Lopphavet	1:100 000
094	Skjervøy – Kvænangen	1:50 000



No	Title	Scale
095	Brynnilen – Loppa – Sørøya	1:50 000
096	Altafjorden og Langfjorden	1:50 000
097	Sørøysundet, Stjernesundet og Rognsundet	1:50 000
098	Sørøysundet – Vargsundet – Hammerfest	1:50 000
099	Kvalsundet – Revsbotn – Reinøysundet	1:50 000
100	Ytre Sørøya	1:50 000
101	Hammerfest – Fruholmen	1:50 000
102	Rolvøysundet – Måsøya	1:50 000
103	Måsøya – Nordkapp – Honningsvåg	1:50 000
104	Nordkapp – Lille-Tamsøya – Sværholt	1:50 000
105	Repvåg – Kistrand	1:50 000
106	Porsangerfjorden. Kistrand – Lakselv	1:50 000
107	Laksefjorden. Kunes – Tømmervik – Mårøya	1:50 000
108	Sværholt – Hopseidet – Nordkinn	1:50 000
109	Nordkinn – Tanahorn	1:50 000
110	Tanafjorden	1:50 000
111	Berlevåg – Båtsfjord	1:50 000
112	Båtsfjord – Hamningberg	1:50 000
113	Hamningberg – Vardø	1:50 000
114	Ytre Kiberg – Vadsø	1:50 000
115	Vadsø – Varangerbotn	1:50 000
116	Sør-Varanger. Bugøynes – Grense Jakobselv	1:50 000



## The Harbour Chart Series

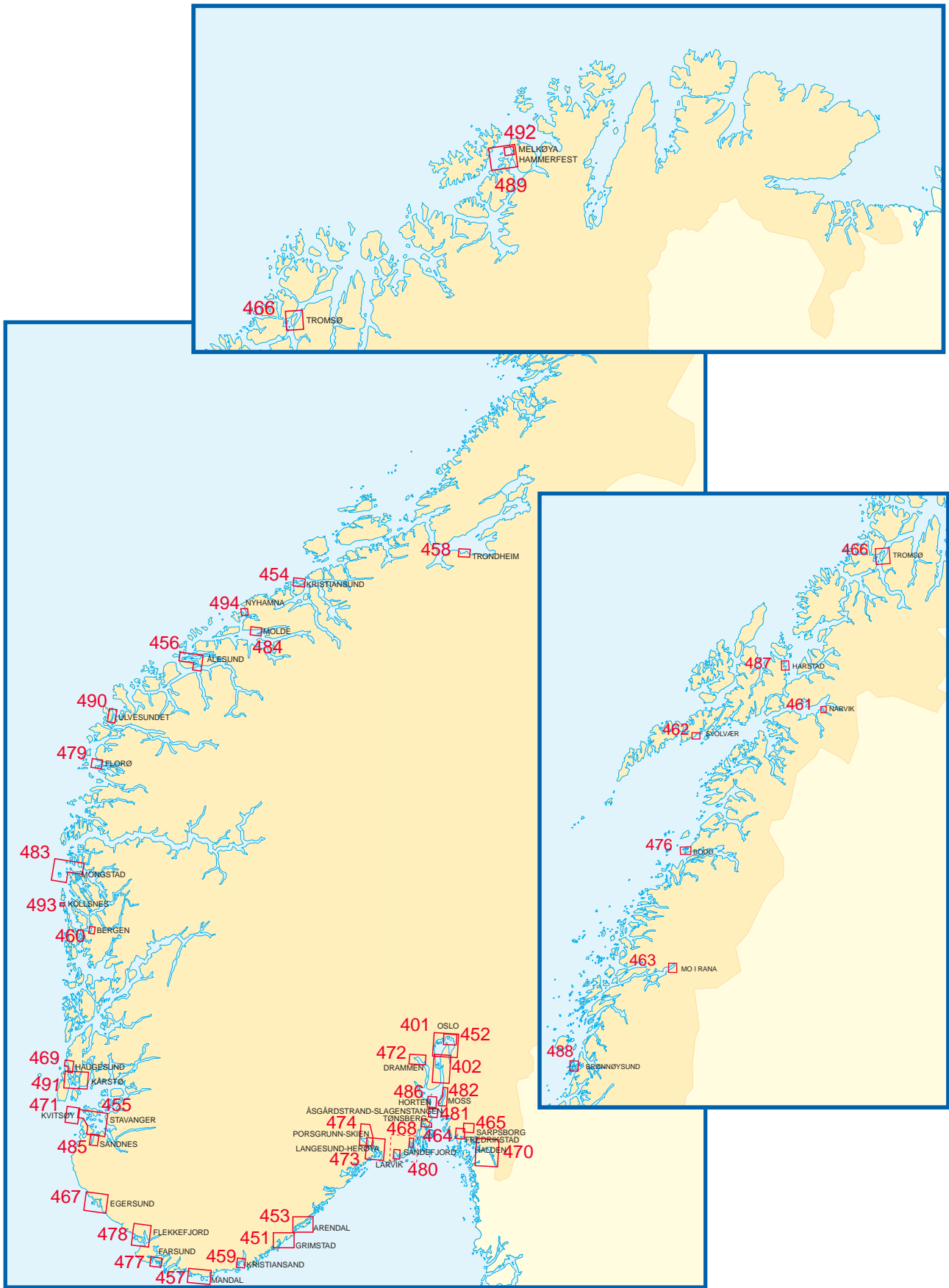
This series includes charts produced at larger scales covering harbours and harbour approaches along the Norwegian coast.

The aim of the Harbour Chart Series is to provide the user with a detailed overview of water depths and the location of mooring sites within the harbours. The more recent harbour charts are constructed using Gaussian cylinder projections, while older versions may have other projections.

Harbour charts marked with an asterisk (\*) come with special editions at larger scales covering the central parts of the harbours in question.

No	Title	Scale
401	Oslo – Spro*	1:25 000
402	Spro – Filtvet*	1:25 000
451	Grimstad*	1:20 000
452	Oslo havn	1:10 000
453	Arendal havn med innseilinger*	1:20 000
454	Kristiansund havn	1:10 000
455	Stavanger havn med innseilinger*	1:25 000
456	Ålesund havn*	1:20 000
457	Mandal havn*	1:20 000
458	Trondheim havn	1:10 000
459	Kristiansand havn	1:10 000
460	Bergen havn	1:10 000
461	Narvik havn	1:10 000
462	Svolvær – Kabelvåg	1:10 000
463	Mo i Rana	1:10 000
464	Fredrikstad havn	1:10 000
465	Sarpsborg havn	1:10 000
466	Tromsøysundet – Sandnessundet med Tromsø havn*	1:20 000
467	Egersund, Sirevåg og Hellvik med innseilinger	1:20 000
468	Tønsberg havn*	1:10 000
469	Nordre Karmsund med Haugesund havn*	1:10 000
470	Singlefjorden, Iddefjorden med Halden havn*	1:25 000
471	Kvitøy og Skudeneshavn*	1:20 000
472	Drammen havn	1:10 000
473	Langesund – Herøya	1:20 000
474	Porsgrunn – Skien*	1:20 000
476	Bodø havn	1:10 000
477	Farsund havn med innseilinger	1:10 000
478	Flekkelfjord havn med innseilinger*	1:20 000
479	Florø havn	1:10 000
480	Larvik havn. Sandefjord havn	1:10 000
481	Åsgårdstrand – Slagentangen	1:10 000
482	Moss havn*	1:20 000
483	Fedje – Mongstad*	1:25 000
484	Molde havn	1:10 000
485	Sandnes havn*	1:10 000
486	Horten havn	1:10 000
487	Harstad havn	1:10 000
488	Brønnøysund med innseilinger*	1:10 000
489	Hammerfest med innseilinger*	1:20 000
490	Ulvesundet med Måløy hamn	1:10 000
491	Kårstø og Karmsundet	1:20 000
492	Melkøya – Muolkkut	1:5 000
493	Kollsnes	1:5 000
494	Nyhamna*	1:10 000



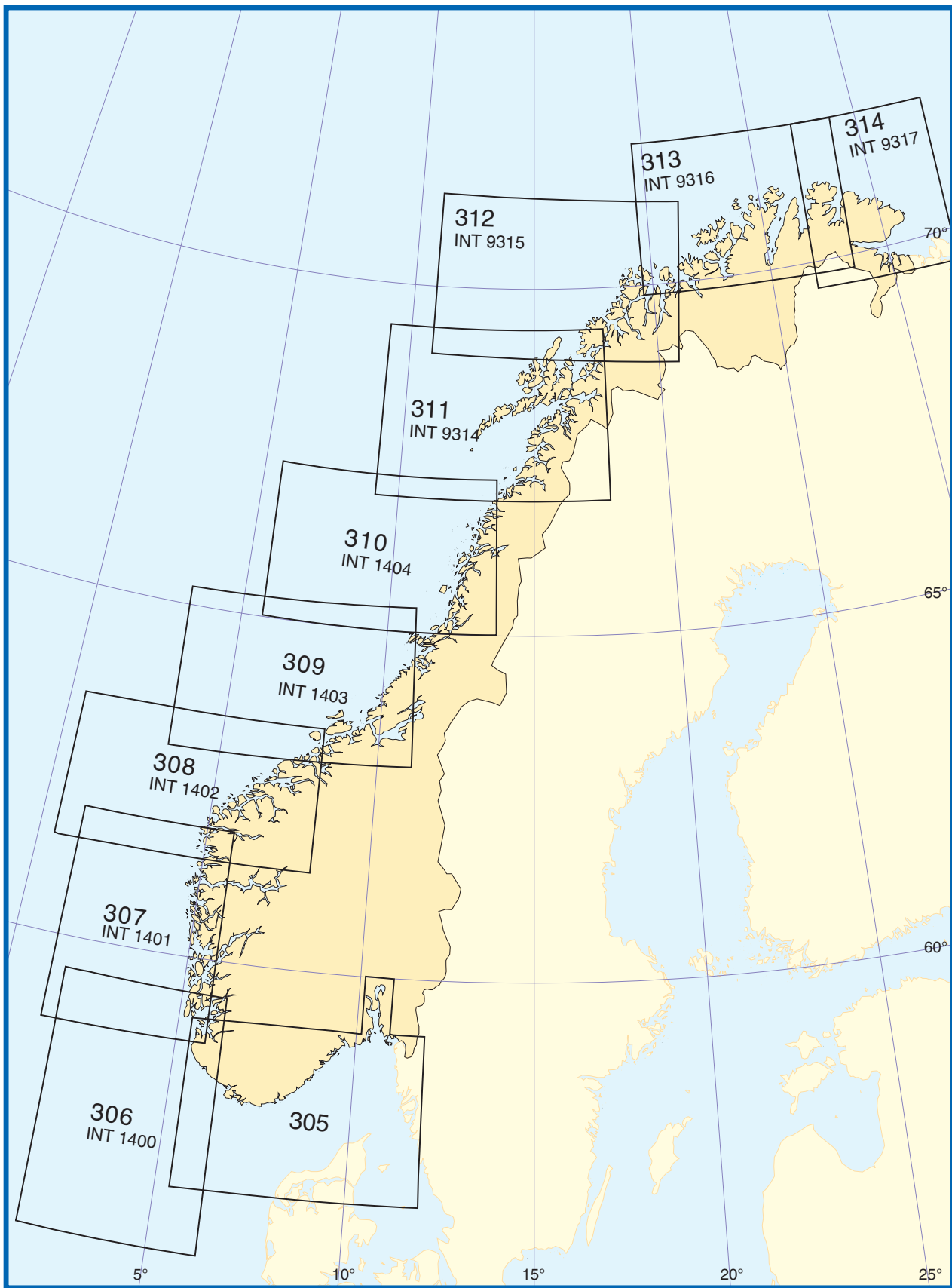




## The Coastal Chart Series

The Coastal Chart Series covers the Norwegian coast from the Swedish border in the south to the Russian border at Grense Jakobselv in the north. The Coastal Chart Series for Svalbard can be found on page 20. The scales used for this series is 1:350 000. Charts in the Coastal Chart Series are used for navigation in coastal waters not covered by the Main Chart Series, for open water sailing along the coast, and on the fishing banks. The charts in this series are normally produced using a Mercator projection.

No	Title	Scale
305	Skagerrak	1:350 000
306	INT 1400 / Nordsjøen	1:350 000
307	INT 1401 / Stavanger – Florø	1:350 000
308	INT 1402 / Florø – Smøla	1:350 000
309	INT 1403 / Smøla - Sklinna	1:350 000
310	INT 1404 / Sklinna - Tennholmen	1:350 000
311	INT 9314 / Støtt - Andenes	1:350 000
312	INT 9315 / Andenes - LoppHAVET	1:350 000
313	INT 9316 / LoppHAVET - Mehamn	1:350 000
314	INT 9317 / Mehamn - Grense Jakobselv	1:350 000

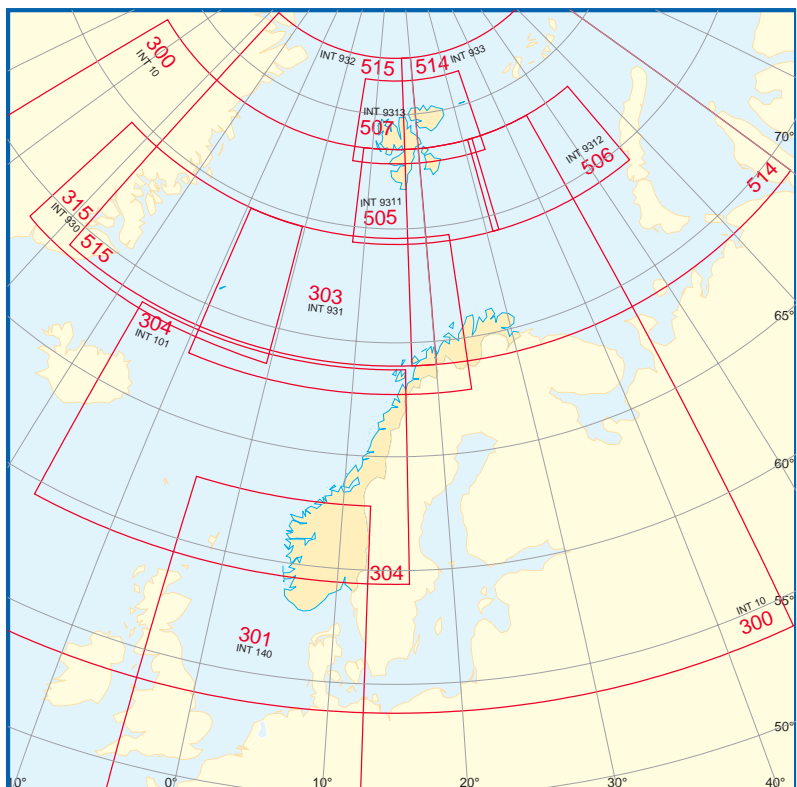




## The General Chart Series

This series includes charts of the North Sea, the Norwegian Sea, the Barents Sea, the Greenland Sea, the North Atlantic Ocean and areas in the Antarctic waters. All charts in this series are produced using a Mercator projection. The scales vary from 1:700 000 to 1:10 000 000. Most general charts are incorporated in an international series of charts produced under the auspices of the International Hydrographic Organization (IHO). They are marked “INT”, and are appended with an international chart number. The construction parallel for these charts will often deviate from the chart’s median latitude.

No	Title	Scale
300	INT 10 / Norwegian Sea	1:10 000 000
301	INT 140 / Nordsjøen	1:1 500 000
303	INT 931/ Norskehavet. Norge – Jan Mayen	1:3 500 000
304	INT 101 / Norskehavet. Norge – Island	1:3 500 000
315	INT 930 / Grønlandshavet	1:3 500 000
505	INT 9311 / Svalbard	1:700 000
506	INT 9312 / Barentshavet	1:700 000
507	INT 9313 / Svalbard. Nordstvalbard	1:700 000
514	INT 933 / Barentshavet	1:2 000 000
515	INT 932 / Svalbard – Grønland	1:2 000 000
549	INT 909 / Mount Siple – Cape Colbeck	1:2 000 000
550	INT 904 / Dronning Maud Land	1:2 000 000

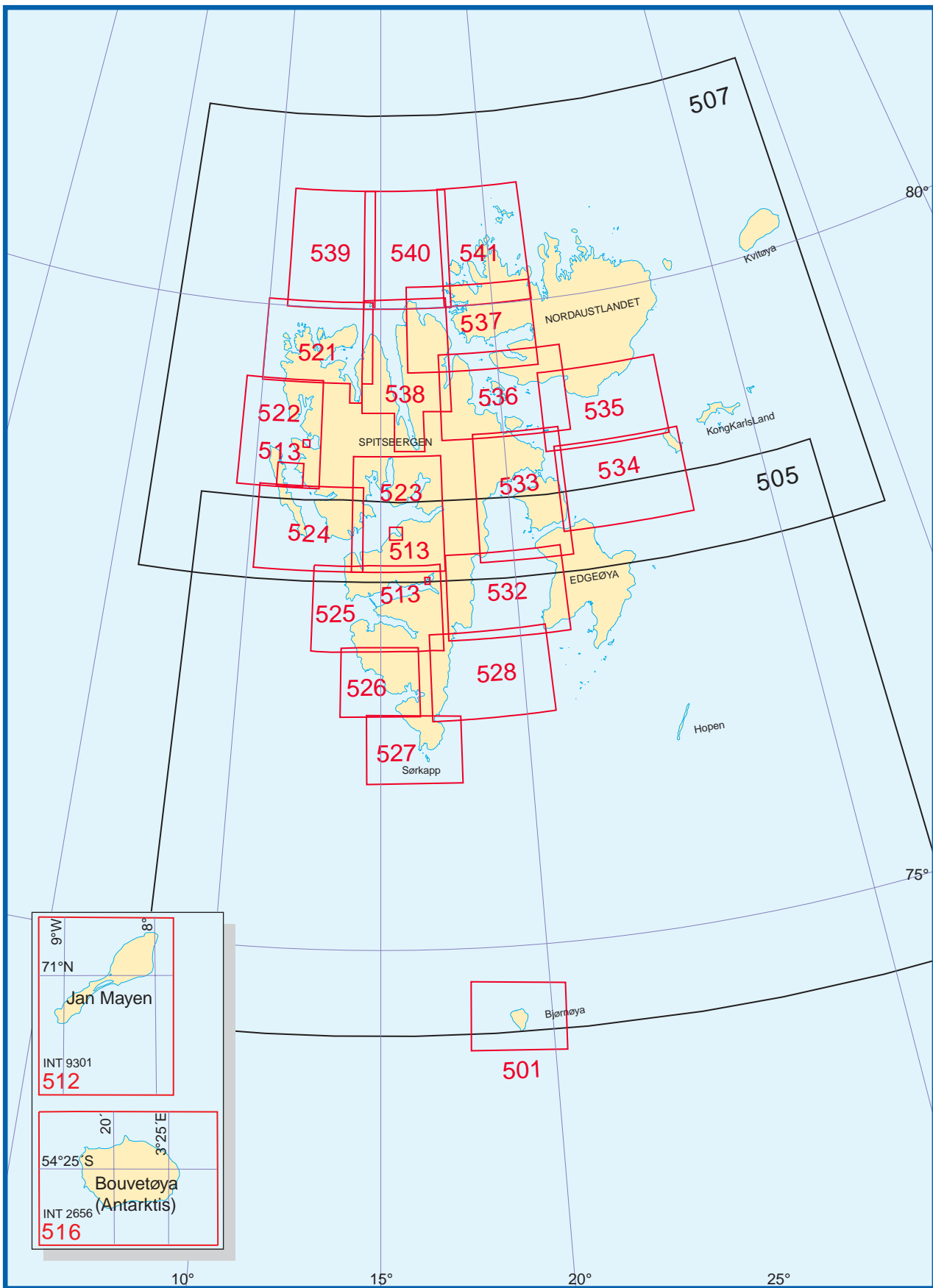




## Main Chart Series for Svalbard, Jan Mayen and Bouvetøya

This is the Main Chart Series for polar waters. The topography data included on some of the charts has been sourced from the Norwegian Polar Institute ( see page 21). Charts are normally at scales of 1:100 000.

No	Title	Scale
501	Bjørnøya	1:100 000
512	INT 9301 / Jan Mayen	1:100 000
513	Svalbard havner: Sveagruva	1:15 000
	Forlandsrevet	1:50 000
	Adventsfjorden	1:25 000
	Ny Ålesund	1:25 000
516	INT 2656 / Bouvetøya	1:60 000
521	Femtebreen – Gråhuku	1:100 000
522	Forlandsrevet – Femtebreen	1:100 000
523	Isfjorden	1:100 000
524	Prins Karls Forland – Barentsburg	1:100 000
525	Bellsund – Van Mijenfjorden	1:100 000
526	Hornsund	1:100 000
527	Sørkapp	1:100 000
528	Storfjorden Sør. Isbukta - Kvalpynten	1:100 000
532	Storfjorden. Kvalpynten - Agardhbukta	1:100 000
533	Storfjorden Nord	
	Freemansundet – Heleysundet – Sørporten	1:100 000
534	Olgastretet. Freemansundet – Svenskøya	1:100 000
535	Erik Eriksenstretet. Sørporten – Svenskøya	1:100 000
536	Hinlopenstretet S. Sørporten – Fosterøyane	1:100 000
537	Hinlopenstretet N. Fosterøyane – Nordporten	1:100 000
538	Wijdefjorden	1:100 000
539	Norskebanken	1:100 000
540	Hinlopenrenna Moffen – Lågøya	1:100 000
541	Nordporten – Sjuøyane	1:100 000







## Charts for courses and schools

Instruction in the use of charts is a vital and essential part of studies for the Norwegian Boating Licence (Båtførerprøven). High levels of demand from educational establishments, teachers and students demonstrate that there is a need for charts for use on courses and in schools.

In order to meet customers' needs, the Hydrographic Service is offering selected charts as training charts. The charts have been selected with a view to training in the use of modern charts, and thus incorporate narrow sounds, open waters, a variety of navigational markers and symbols, light sectors and such like. The chart scale is normally 1:50 000. For the Stavanger-chart, the scale is 1:25 000.

Charts for use on courses and in schools are not updated, and for this reason must not be used for navigation.

The charts can be downloaded for free at <http://kartverket.no/Kart/Sjokart/nyheter-sjokart/Gratis-skolekart/>

## How to contact the Norwegian Hydrographic Service

An updated list of the Hydrographic Service's Norwegian and overseas retailers can be found at:

**[www.kartverket.no](http://www.kartverket.no)**

Order products from the Hydrographic Service at:

[sjokart@kartverket.no](mailto:sjokart@kartverket.no)

For enquiries and customer assistance, please call 32 11 80 00.

**Postal address:**

Norwegian Hydrographic Service  
P.O. Box 60,  
4001 Stavanger

**Office address:**

Professor Olav Hanssensvei 10,  
N-4021 Stavanger.

**For Electronic Navigational Charts (ENC):**

e-mail: [info@primar.org](mailto:info@primar.org), or call +47 51 93 95 00.

[www.primar.org](http://www.primar.org).

*Photos: Morten Brun, Astri Strand and Omar Årsvoll Olsen*



Kartverket

Ajour as of December 2022